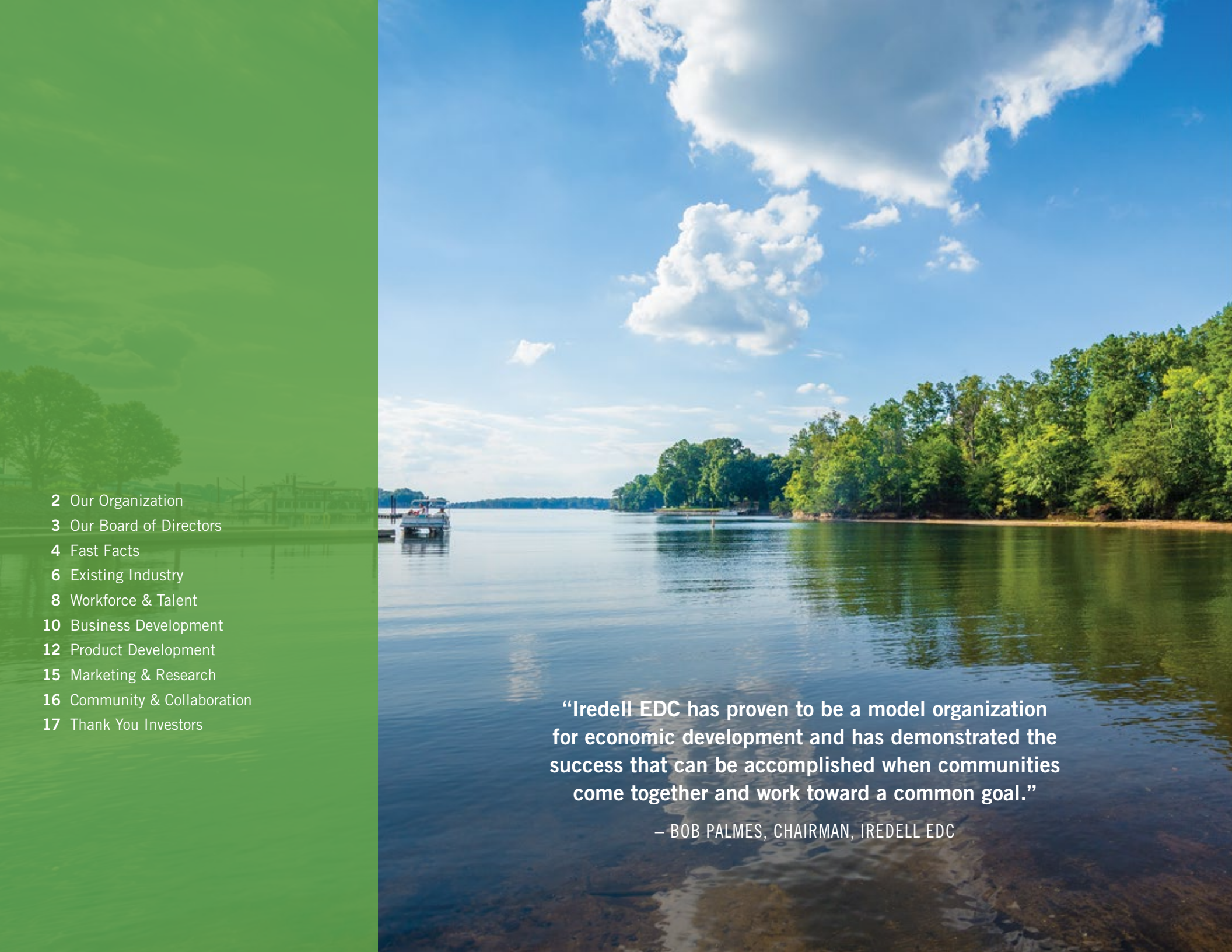


# ANNUAL REPORT

2021  
2022



- 
- 2 Our Organization
  - 3 Our Board of Directors
  - 4 Fast Facts
  - 6 Existing Industry
  - 8 Workforce & Talent
  - 10 Business Development
  - 12 Product Development
  - 15 Marketing & Research
  - 16 Community & Collaboration
  - 17 Thank You Investors

**“Iredell EDC has proven to be a model organization for economic development and has demonstrated the success that can be accomplished when communities come together and work toward a common goal.”**

– BOB PALMES, CHAIRMAN, IREDELL EDC





***North Carolina is  
the leader for  
Best Business Climate.***

*(Business Facilities Magazine,  
July 2022)*

## Chairman's Message

**On behalf of the Board of Directors, I am pleased to present the FY2021-22 Annual Report.** Activity remained strong with the Iredell EDC responding to 210 project inquiries, resulting in 13 company announcements, representing 904 new jobs, \$784 million investments, occupying 2.2 M SF in the Iredell community. Of the 210 projects, 26 projects represented product development, which have resulted in 6 announcements, representing \$540 M in investment, encompassing 912 Acres, with 7.2 M SF.

We strengthened existing industry relationships through hosting 3 Industry Leaders Councils, 126 existing industry engagements, which resulted in 331 referrals to our network of partners. We captured a pulse of the business community through a survey with 121 participating companies who shared their insights and perceptions of their business and our local business community.

Within our Workforce Pillar we launched Iredell Ready, a new initiative in partnership with Iredell County, our public school systems, Mitchell Community College, our industry and workforce partners that will align and enhance the workforce pipeline by strengthening partnerships and creating a holistic workforce development approach focused on life-long learning.

We want to thank our investors for supporting our efforts. Business and talent have choices on where they live and work, and working together as a community and region ensures our competitiveness in the global marketplace. As we move into our new fiscal year, Iredell EDC remains focused on supporting the business community, enhancing the quality of life, and promoting our premier location to attract new jobs and investment.

A handwritten signature in black ink, appearing to read "Bob Palmes".

**Bob Palmes**

Chairman, Iredell EDC

VP Business Development, G.L. Wilson Building Company

# Our Organization

We are a public-private partnership that promotes economic growth and stability in our community by supporting the creation of new jobs and encouraging investment. We accomplish this through business development, supporting existing industry, building a world-class workforce, and collaboration with the community to create prosperity for all.



## OUR PILLARS

- Pillar 1 **Existing Industry**
- Pillar 2 **Workforce & Talent**
- Pillar 3 **Business Development**
- Pillar 4 **Product Development**
- Pillar 5 **Marketing & Research**
- Pillar 6 **Collaboration & Community**

## IREDELL EDC TEAM

**Jenn Bosser, CEcD**  
President & CEO

**Todd Black, EdD**  
Existing Industry Manager

**Shawn Cummins**  
Research Analyst

**Joan Day Duerr**  
Marketing Manager

**Lisa Taylor**  
Operations Manager

**Chad Thomas**  
Director, Business Development



# Our Board of Directors 2022

## PUBLIC LEADERSHIP

**Chairman James Mallory**  
Board of Commissioners  
Iredell County

**Beth Mull**  
County Manager  
Iredell County

**Mayor Miles Atkins**  
Town of Mooresville

**Randy Hemann**  
Town Manager  
Town of Mooresville

**Mayor Costi Kutteh**  
City of Statesville

**Ron Smith**  
City Manager  
City of Statesville

**Ron Wyatt**  
Town Manager  
Town of Troutman

**Mayor Teross Young**  
Town of Troutman

## EXECUTIVE BOARD / PRIVATE SECTOR LEADERSHIP

**Bob Palmes**  
**Chair**  
VP Business Development  
G.L. Wilson Building Co.

**David Alexander**  
**Vice Chair**  
President  
J.T. Alexander & Son, Inc.

**Jeff Cernuto**  
**Secretary**  
President  
Princeton Communities

**Paul Cook**  
**Treasurer**  
Business Banker  
First Citizens Bank

**Jim Marshall**  
**Past Chair**  
President & CEO  
blueharbor bank

**Steve Dailey**  
Chairman  
NGK Ceramics USA, Inc.

**Bill McCombs**  
Vice President &  
Project Manager  
McCombs Steel

**Chad Sanders**  
VP of Merchandising  
Lowe's Companies

**Marian Steele Clark**  
President  
J.C. Steele & Sons, Inc.

**Gary Thomas**  
Partner  
Pressly, Thomas & Conley  
Attorneys at Law

## EX-OFFICIO LEADERSHIP

**Jenn Bosser, CEcD**  
President & CEO  
Iredell County EDC

**Dr. Tim Brewer**  
President  
Mitchell Community  
College

**Mark Brady**  
President  
South-Iredell Community  
Development Corporation



# FAST FACTS

## ABOUT IREDELL COUNTY

Spanning 574 square miles with a population of 191,968, Iredell is home to six communities: Harmony, Love Valley, Mooresville, Troutman, Statesville, and Union Grove. Iredell is the 15th largest county by population in North Carolina and was the 3rd fastest growing county in the Charlotte Region with 2.3% growth year over year from 2021 to 2022.

20% POPULATION GROWTH  
SINCE 2010



### ACCOLADES

**#1** LOWEST COUNTY TAX RATE in the Charlotte Region  
(NC Department of Commerce, July 2022)



**#3** FASTEST GROWTH IN NEW  
INDUSTRIAL DEVELOPMENT PRODUCT  
in the Charlotte Region  
(Charlotte Business Journal, May 2022)

**#3** FASTEST GROWING COUNTY in the Charlotte Region  
(CLT Alliance, US Census Bureau Data Source, March 2022)





## NC ACCOLADES



**#1 AMERICA'S TOP STATE FOR BUSINESS**  
(CNBC, July 2022)

**#1 LEADER FOR BEST BUSINESS CLIMATE**  
(Business Facilities Magazine, July 2022)



**NC is one of two states to receive Area Development Magazine's Inaugural 2022 Platinum Shovel Award – beyond the gold standard for investment and job creation.**  
(Area Development Magazine, June 2022)

### INCOME & HOUSING



Total Households Occupied **73,616**  
Median Household Income **\$66,300**  
Median Household Expenditures **\$62,739**

### INDUSTRY



Total Establishments **8,006**  
Retail Establishments **1,008**  
Healthcare & Social Services **731**  
Manufacturing **450**  
Accommodations & Food Service **482**



Total Employment **80,689**  
Manufacturing **14,003**  
Retail **10,296**  
Healthcare & Social Services **9,974**  
Accommodations & Food Service **6,370**

### LABOR FORCE



Total Labor Force **96,169**  
Unemployment Rate **3.5%**  
County Average Wage **\$59,411**  
High School Graduation Rate **90.14%**  
**72 Universities** within 50 miles  
Average Commute Time **24 min**

### FY21-22 COUNTY PERMITTING PROVIDED BY IREDELL COUNTY



Total Permit Applications (Residential & Commercial) Year-Over-Year **38,835**  
Residential Permits Issued **3,604**  
Value of Residential Permits Issued **\$476.7 M**  
Commercial Permits Issued **2,702**  
Value of Commercial Permits Issued **\$287.6 M**





## Existing Industry



Existing industry engagement is a priority of the Iredell EDC. Our existing industry expansions represented 70% of the new investment and 96% of the new jobs created in Iredell County for FY21-22. This past year we engaged with 126 existing industries, resulting in 331 referrals. This engagement takes place in many forms to include convening our Industry Leaders Council to provide industry leaders with networking and best practices, fostering workforce participation in career fairs and apprenticeships, engagement through letters of support for transportation initiatives, and participating in surveys that help guide our local and regional economic development priorities. Our existing industries continue to drive our economic development growth, through continued investment in their facilities, machinery and equipment, and the creation of new jobs in our local community.

### INDUSTRY LEADERS COUNCIL

Held quarterly, the Industry Leaders Council brings together local leaders for networking, industry tours, and shared learning. Our engagement with industry has resulted in strong participation in community initiatives including transportation

initiatives, workforce development, industry labor market and industry competitive analysis surveys

### BUSINESS PULSE SURVEY

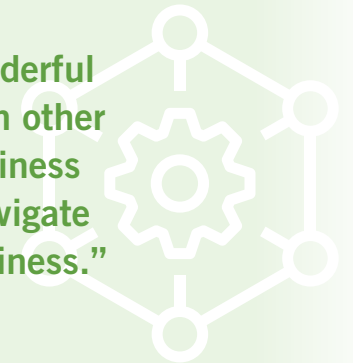
In August 2021, Iredell EDC launched the Business Pulse Survey to help our community understand their viewpoints on the local business

---

**“The Iredell EDC has been a wonderful partner in helping us connect with other local businesses, promoting business opportunities, and helping us navigate resources to help us grow our business.”**

— TOM ONSRUD, CEO, C.R. ONSRUD

---





climate as well as identifying the specific needs of businesses. The full report from the survey can be found at [Iredelledc.com](http://Iredelledc.com). Key takeaways from the survey are as follows:

- Outlook for businesses is strong with nearly a third of business anticipating employment and sales growth.
- Our communities received high remarks for Quality of Life, Overall Business Climate, & Public Safety.
- Companies expressed concerns about COVID, supply chain disruption, inflation, and difficulty acquiring and retaining employees.

### ANNUAL INDUSTRY LEADERS EVENT

Iredell EDC shared results of the 2021 Business Pulse Survey with the community at our first Annual Industry Leaders Event in October 2021 with 100 attendees. The event was held virtually in partnership with Mitchell Community College in celebration of National Manufacturing Day. The event featured keynote speaker Ray Pittard, Executive Vice President for Supply Chain, Engineering, and Information Technologies, with Trane Technologies.



### REVAMP

The Town of Mooresville and Iredell County have allocated \$260,000 for grants to companies participating in ReVamp; a technical assistance program to help companies engaged in motor-sports with diversification efforts into new markets. The program launched in May 2021 and as of June 2022, Iredell EDC has worked with four companies in the program.

### EXISTING INDUSTRY HIGHLIGHTS

**Pet Screening** Named by *Charlotte Business Journal* Best Places to Work 2021

**Roush Yates Manufacturing Solutions** Receives ISO 13485 Medical Device Certification

**Iredell Memorial Hospital** Rated as "High Performing" in Several Specialties

**Town of Mooresville** Awarded for commitment and contributions to the motorsports industry by the NC Motorsports Association

**Lowe's Companies** Rated #2 Top Companies Best Places to Work and Grow Your Career (*LinkedIn Charlotte City Edition, July 2021*)

**City of Statesville** Receives Advancing Technology Award for Advanced Metering Infrastructure Initiative. (*NC League of Municipalities Local Leadership Foundation, 2022*)



126  
ENGAGEMENTS

331  
REFERRALS



3 INDUSTRY  
LEADERS  
COUNCILS  
(50 participants)



15  
SBO CLIENTS

# Workforce & Talent

Growing and developing Iredell's workforce and talent pipeline is a strategic priority to the Iredell EDC and our partners. Initiatives, such as Iredell Ready, have emerged as a response to the demand for a highly skilled, ready-to-work labor force for our local industry sectors.

## IREDELL READY

Iredell EDC has been working in partnership with our local workforce partners to launch a new workforce initiative called "Iredell Ready" with a goal to identify, align, and enhance strategic priorities across the workforce development pipeline from early childhood education to retirement. Over \$750,000 in funding was committed in partnership with Iredell-Statesville Schools, Mooresville Graded School District, Greater Statesville Chamber of Commerce, Centralina Workforce Development Board, Mitchell Community College, and the Iredell County Board of Commissioners. Industry engagement and alignment are integral to ensuring the work set forth is relevant and responsive to the needs of industry. In May, we engaged 15 employers representing our six key industry clusters (information technology, healthcare, logistics and distribution, manufacturing, agriculture, and finance) participated in a survey and discussion to help us define the goals, objectives, and metrics.

Key priorities for the FY22-23 year will focus on the development and implementation of a comprehensive marketing strategy, alignment of workforce initiatives among partners, identifying and tracking metrics, and promoting broader engagement with partners in industry, education, and the community.

## EDGE FACTOR

Iredell County has continued the career awareness journey with Edge Factor providing the on-line digital platform for the fourth consecutive year. This tool connects students with local industries and allows them to explore various jobs in our community. In partnership with Iredell-Statesville Schools, the Greater Statesville Chamber of Commerce, and Iredell EDC, we have successfully added 28 new companies with content to the platform inspiring 15,000 student views. Discover the latest content on Iredell's community hub at [edgefactor.com/IredellInc](https://edgefactor.com/IredellInc).







## WORKFORCE IN ACTION



**106** PARTNER REFERRALS

**3** Workforce Councils

Iredell EDC hosted 3 Workforce Councils and provided 106 Partner Referrals.



**APPRENTICESHIPS**

**8** Businesses  
**19** Apprentices

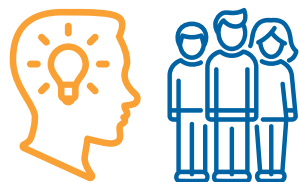


**29**  
**INTERNSHIPS & PRE-APPRENTICESHIPS**



**TEACHERS IN INDUSTRY DAYS**

**2** Days  
**27** Teachers  
**6** Business Tours



**STUDENT CAREER PREP**

Iredell-Statesville Schools  
High School Senior Career Fair  
**64** Businesses, **240** Students

Mooreville Graded School District  
Career Bridge  
**20** Businesses, **50** Students

**290** Total Students



**CAREER SERVICES**

**846** County Employers

NCWorks Career Centers provided 7,868 services to 846 County Employers



**\$37,585**

**UpSkill Centralina Grants**

Awarded to 5 Iredell County Businesses to Train 70 Employees



**\$126K** Mitchell Community College Funds

Awarded to 15 Iredell Companies to Train 1,038 Employees



## New & Expanding Activity



13  
PROJECTS



\$784 M  
INVESTED



900  
NEW JOBS



2.2 M SF  
NEW SPACE

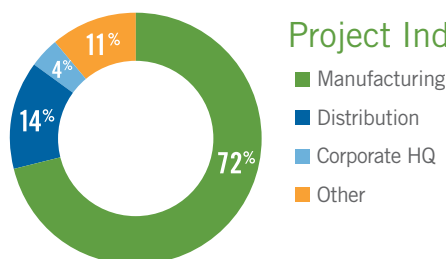
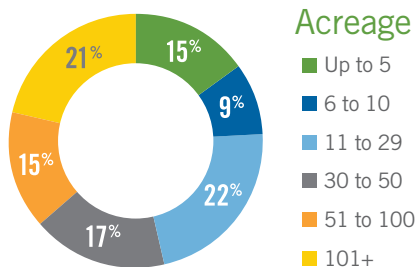
# Business Development

## PROJECT ACTIVITY RECAP

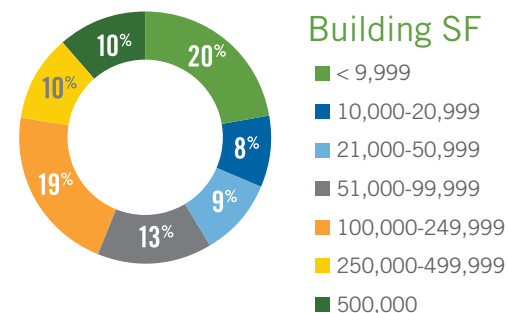
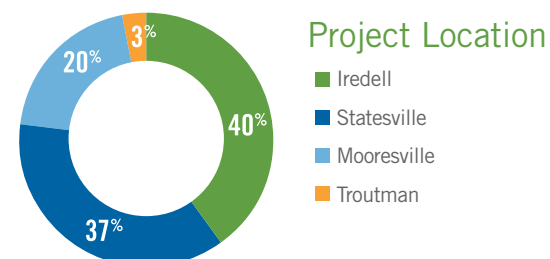
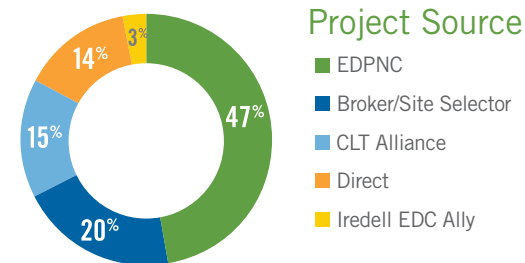
Our pipeline of projects remained strong year-over-year. Iredell EDC responded to 210 project inquiries and facilitated 19 site visits. We had 13 announced projects totaling over \$784 M in investment, 904 jobs and 2.2 M SF. This growth was fueled by the expansion of our existing industries, which represented 70% of investment and 94% of new job creation. Among the key benefits of our community are access to transportation corridors, a robust labor market, low cost of living, and a business-friendly environment. Iredell EDC helped facilitate 33 grants totaling \$42.8 M in local and state government funding to support the expansion and recruitment of new business.

## ECONOMIC DEVELOPMENT INCENTIVE POLICIES

Iredell EDC worked with our public sector partners to update their respective economic development incentive policies and created a new framework to support new industrial development. The Town of Mooresville Board of Commissioners approved an updated incentive policy in November 2021 and the City of Statesville City Council in June 2022.



**Iredell EDC helped facilitate 33 grants totaling \$42.8 M in local and state government funding.**





## New & Expanding Project Highlights

### BATTLE COPACKING

**\$13.6 M / 20 Jobs / 128,000 SF / New**

Battle Copacking announced plans to invest \$13.6 M and the creation of 20 jobs. The company will occupy a new 128,000 SF building in Deerfield Business Park, Mooresville, NC.

### BESTCO

**\$177 M / 399 Jobs / 445,000 SF / Existing**

BestCo announced an investment of \$177 M and the creation of 399 jobs. The company will expand their manufacturing and distribution facilities at Mooresville Business Park East. The expansion will bring their total footprint in Mooresville to over 1M SF and employment over 1,000 people. *(Announcement photo on opposite page.)*

### C.R. ONSRUD

**\$17 M / 25 Jobs / 67,000 SF / Existing**

C.R. Onsrud announced a \$17 M expansion and the creation of 25 jobs. The company will expand their existing building and construct an additional building on an adjacent lot in Troutman.

### DENSO MANUFACTURING NORTH CAROLINA INC

**\$38 M / 268 Jobs / Existing**

DENSO Manufacturing North Carolina Inc. (DENSO), located in Statesville, is a manufacturer

of DC Motors for the automotive industry. The company plans to invest \$38 M with the creation of 268 jobs at their Statesville facility for the production of DC “SMART” motors.

### KESELOWSKI ADVANCED MANUFACTURING (KAM)

**\$5 M / 10 Jobs / Existing**

Keselowski Advanced Manufacturing (KAM) announced an investment of \$5 M and the creation of 10 jobs. KAM is vertically integrated through simulation and design engineering, serial production manufacturing, additive manufacturing, and CNC capabilities.

### LIBURDI

**\$1.2 M / 7 Jobs / Existing**

Liburdi announced an expansion in Mooresville of \$1.2 M and the creation of seven new jobs. The investment will shorten lead times and enable them to service a new product line of military engine parts.

### ORIGIN FOOD GROUP

**\$3 M / 40 Jobs / Existing**

Origin Food Group announced a \$3 M expansion with the creation of 40 new jobs. The company will add a production line at the Statesville facility for its growing client base.



### SHERWIN-WILLIAMS

**\$324 M / 183 Jobs / 836,000 SF / Existing**

Sherwin-Williams announced a \$324 M investment with the creation of 183 jobs. The project includes a 36,000 SF expansion and a new 800,000 SF distribution facility at the Larkin Regional Business Park.

### XPO LOGISTICS

**\$4.6 M / 400 Jobs / 639,600 SF / New**

XPO Logistics announced a lease at 2203 Sherrill Drive representing 639,600 SF. The company ranks among the Charlotte Region's largest logistics companies.

### YANJAN

**\$5.2 M / 50 Jobs / 58,032 SF / Existing**

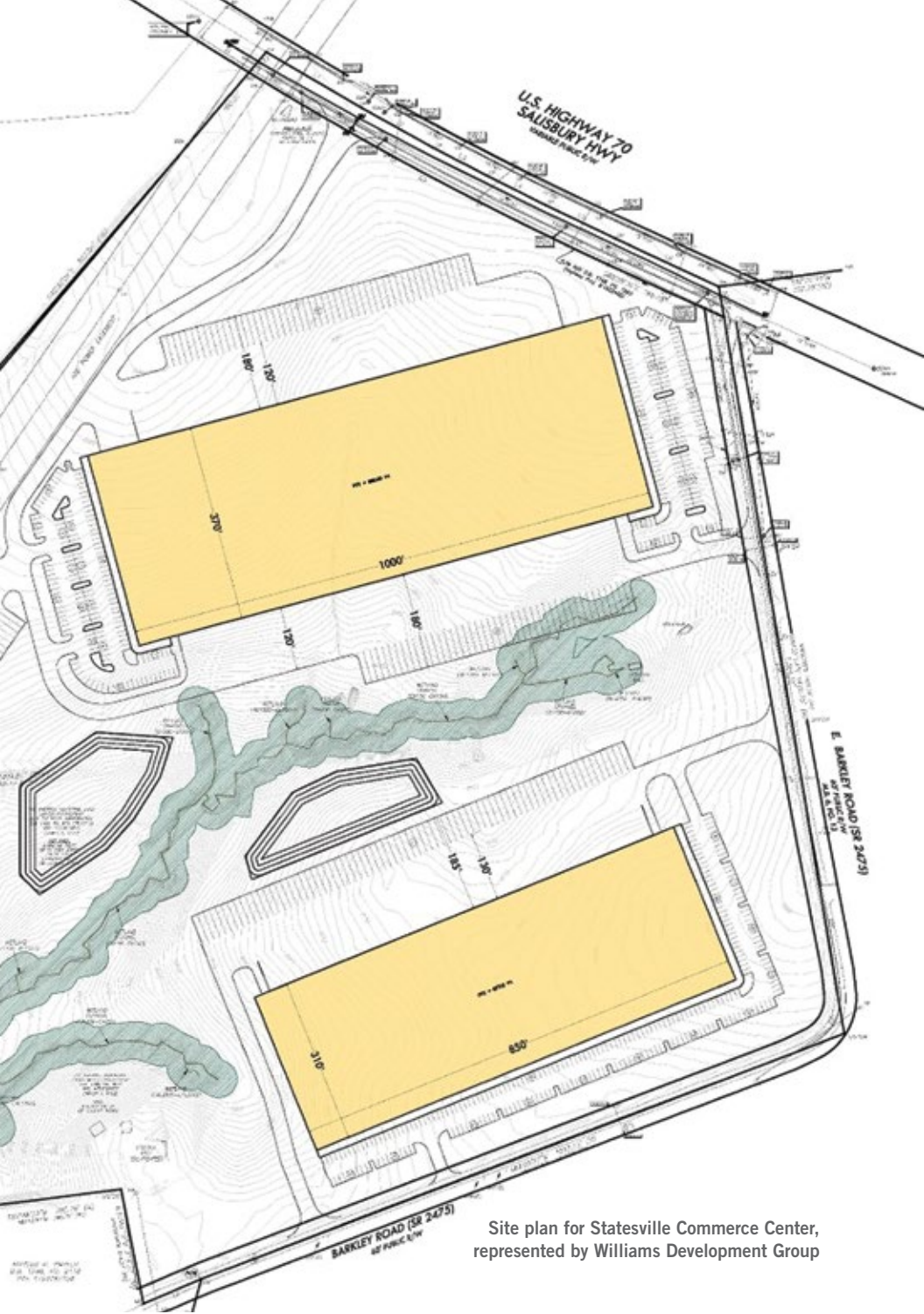
Yanjan, which started in 2017 in Statesville, is a manufacturer of nonwoven fabrics and global consumer products. The project will add machinery, equipment, and two production lines.

**“Sherwin-Williams’ decision to expand its footprint here represents the largest single investment in the history of our city.”**

— MAYOR COSTI KUTTEH, CITY OF STATESVILLE

IREDELL COUNTY ECONOMIC DEVELOPMENT CORPORATION 11





Site plan for Statesville Commerce Center, represented by Williams Development Group

“It’s speculative, but it’s going to be off the market before the construction is done. We’re reaping the benefits of having available land to meet the demand.”

— GRANT MILLER, SENIOR DIRECTOR, COLLIERS INTERNATIONAL

## Product Development

Iredell EDC focuses on product development to maintain and strengthen the community’s economic competitiveness. This is done through the development of sites and the promotion of new buildings. With the Charlotte Region experiencing industrial vacancy rates less than two percent, the County has been the beneficiary as developers invest in industrial real estate projects. Since July 2021 Iredell EDC has announced six product development projects with investments totaling over \$540 M in the proposed development of 7.2 M SF. As of August 2022, Iredell EDC has a pipeline of an additional 20 active projects representing 15+ M SF. If fully actualized these capital investments will total approximately \$1 B.

### Iredell County Commercial Development



6 PROJECT  
ANNOUNCEMENTS



\$540M  
INVESTED



7.2 M SF  
DEVELOPED SPACE



913 ACRES





---

**77 NORTH LOGISTICS  
CENTER / TPA GROUP**  
159 Acres / \$1.7 M SF

---

The 77 North Logistics Center, 159-acre development, is an industrial park in Troutman located off Highway 21. The proposed development is for two industrial buildings totaling 1.7 M SF, representing a capital investment of \$150 M. The development is represented by TPA Group based in Atlanta.

---

**WILCOMBS / G.L. WILSON  
BUILDING CO. & MCCOMBS STEEL**  
20.51 Acres / 111,488 SF

---

The Mooresville Business Park East speculative building is being developed by WILCOMBS, LLC, a partnership between G.L. Wilson Building Co. and McCombs Steel. The partnership broke ground on approximately 111,488 SF of speculative manufacturing located in Mooresville, N.C. The site includes 20.51 acres with the ability to expand the building up to an additional 83,616 SF.

---

**NC PARK 40/77 /  
NORTHPOINT DEVELOPMENT**  
400+ Acres / 3.2 M SF

---

Northpoint Development, a real estate development firm, is developing approximately 400 acres located at the northeast intersection of Interstates I-77 and I-40, north of Statesville, N.C. The finished development will comprise of over 3.2 M SF of industrial facilities, representing over \$215 M in investment.

---

**NORTH CHARLOTTE COMMERCE  
CENTER / STRATEGIC REAL  
ESTATE PARTNERS**  
78 Acres / 710,640 SF

---

North Charlotte Commerce is an industrial development at Deerfield Business Park in Mooresville, N.C. The project will be 710,640 SF of industrial development and is represented by Strategic Real Estate Partners based in Atlanta.

---

**STATESVILLE COMMERCE CENTER  
/ WILLIAMS DEVELOPMENT GROUP**  
70 Acres / 633,837 SF

---

Statesville Commerce Center is an industrial development site off Highway 70. The proposed development is for two buildings totaling 633,837 SF. The development is represented by Williams Development Group based in Winston-Salem.

---

**STATESVILLE LOGISTICS  
PARK / TPA GROUP**  
185 Acres / 1 M SF

---

Statesville Logistics Park is comprised of 185 acres. The site is located at the northwest gateway of Highway 77 and Highway 21, exit 54. The first building will consist of 1 M SF and is expandable to 1.4 M SF.



# Community Project Highlights

## NEW TELECOMMUNICATIONS TOWER

Public Safety / Town of Harmony

The FirstNet and AT&T in partnership Town of Harmony added a new tower to improve communication for first responders and public safety.

## CHURCH STREET DEVELOPMENT

Downtown Development / Mooresville

The Town of Mooresville Board approved an agreement with Lansing Melbourne Group for a mixed-use development that is expected to be apartments, retail and office uses, and a four-to-five story parking deck that the Town will own.

## STATESVILLE HOUSING AUTHORITY

\$6.7M / Utilities / Statesville

Statesville Housing Authority celebrated the groundbreaking of its Arts and Cultural Center along McElwee Street in Statesville, N.C. The building will be converted into a three-floor, 15,000-square-foot center for various arts and culture and will include a 200-seat amphitheater, seven art studios for rent, recording studios, and lesson rooms. The campus will also have a sculpture garden, skate park, and outdoor areas to use.

## NEW FIRE STATION #6

Public Safety / Mooresville

The Town of Mooresville celebrated the groundbreaking of a new fire station at the entrance of the Mooresville Business Park East.

## VANCE HOTEL

Downtown Development / Statesville

The City of Statesville Council approved the sale of the Vance Hotel, a historical landmark in Downtown Statesville. The Rainier Group will purchase the landmark. Led by Steven Barker, the developer plans to turn the Vance Hotel into a 60-room boutique hotel with plans to enhance an adjacent parking deck and will leverage historic property tax credits.

## BARIUM SPRINGS

800 Acres / Iredell County

The Children's Hope Alliance announced the sale of the Barium Springs property, which includes parcels in both Troutman and Statesville, to Prestige Acquisitions, LLC, for a mixed-use development, including homes, light commercial, a school, and civic center.

## INSTITUTE OF DIGITAL ENGINEERING

Town of Mooresville, Iredell County, Corvid Technologies

Creation of a not-for-profit institute born out of conversations between Corvid Technologies, the Town of Mooresville, Iredell County, and Iredell EDC to create a center for digital engineering to position Mooresville as an innovation hub.

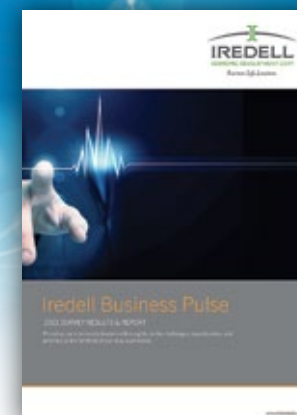




# Marketing & Research



(Left) Site Selection Magazine Cover and Feature Spread, May 2021 issue  
(Right) Iredell EDC Business Pulse Survey Results Report



**1,499** Newsletter Subscribers  
(Up 57% from last year)

**36%**

Newsletter Open Rate



**25K** Website Visitors  
**3K** New Visitors

**Iredell County made the state's top 25 list of largest project announcements ranked by job creation. BestCo ranked #11 and Sherwin-Williams #25.**

*(Business North Carolina, July 2021)*

## IREDELL EDC IN THE NEWS

Throughout the year, our team has attended and supported local businesses with the coordination of press coverage for announcements, tours, and visits. We maintained a presence with our investors by electronic outreach, via newsletter, social media, and events. Iredell County's project announcements were highlighted in industry publications for its large capital investment as well as the high volume of job creation for 2021-2022. As a data-driven organization, we support and share the latest, up-to-date information on market trends and our local community. We tracked marketing trends and shared business insights, such as our Business Pulse Survey, Forward Together Panel Discussion, Investor Quarterly Meetings, and Annual Meeting.

## FEATURES & PRESS CLIPS

Through media outreach efforts, the Iredell EDC supports our community by sharing our story, as the place for life, business, and location. Media relations and connections with our partners, have resulted in numerous publications and articles featuring Iredell County and its strengths.

## MAJOR HEADLINES

- **Economic Development Gaining Momentum in Iredell County with Expansion Projects**  
(Charlotte Business Journal, Feb 2022)
- **New Frontiers Emerging for Industrial Development in Charlotte Region**  
(Charlotte Business Journal, May 2022)
- **Forward Together: Iredell County** (Charlotte Business Journal, March 2022)
- **Sherwin-Williams To Invest \$324 M in North Carolina Expansion**  
(Charlotte Business Journal, Feb 2022)
- **Charlotte Region Intelligence Report** – Iredell EDC advertised within the 9-page editorial  
(Site Selection Magazine, May 2022)

# Community & Collaboration

Our team works with partners on several initiatives to position Iredell County and the region as a competitive location. We are actively involved in local, regional, and state conversations presenting and representing Iredell County's business community.

Centralina Regional Council  
Centralina Workforce Development Board  
Charlotte Regional Business Alliance  
Downtown Mooresville Commission  
Downtown Statesville Development Corporation  
Greater Statesville Chamber of Commerce  
Economic Development Partnership of North Carolina  
International Economic Development Council  
Iredell Industry & Education Alliance – Iredell Ready  
Iredell-Statesville Schools  
Mitchell Community College  
Mooresville Convention & Visitors Bureau  
Mooresville-South Iredell Chamber of Commerce  
Mooresville Graded School District  
NASCAR Technical Institute  
NC State, Industry Expansion Solutions

NCWorks  
North Carolina Community College System  
North Carolina Department of Commerce  
North Carolina Economic Development Association  
North Carolina Manufacturing Institute  
North Carolina Motorsports Association  
myFutureNC  
Small Business and Technology Development Center  
South-Iredell Community Development Corporation  
Statesville Convention & Visitors Bureau  
University of North Carolina – Charlotte  
United Way of Iredell County  
Rotary Clubs – Iredell/Statesville/Mooresville/Lake Norman Region





# Thank You Investors

Together with the commitment and dedication of our Investors, Iredell EDC continues to make strides to build a greater community through business attraction, encouraging investment and creating new jobs. We want to thank our Investors for their support and look forward to working with you in 2022-2023 to make Iredell a place for **Business. Life. Location.**

## OUR INVESTORS

### VISIONARY (\$10,000+)

Iredell County  
Town of Mooresville  
City of Statesville  
Town of Troutman  
South Iredell Community  
Development Corporation  
Lowe's Companies  
Wells Fargo

### LEADERSHIP (\$5,000-\$9,999)

BestCo, Inc.  
Corvid Technologies  
Dominion Energy, NC Gas  
Duke Energy Carolinas  
G.L. Wilson Building Company  
Holland Realty & Mortgage Corp.  
Mooresville Convention &  
Visitors Bureau  
NGK Ceramics USA, Inc.  
PCS/Professional Computer Services  
PIVOT PR  
Truist

### PARTNER (\$3,000-\$4,999)

Alfred Williams & Company  
EnergyUnited  
Jones, Childers, Donaldson & Webb, PLLC  
OneDigital  
McCombs Steel Company  
Mitchell Community College  
Potter & Company, P.A.  
Princeton Communities  
Raymer Oil Company  
Structure Medial

### CONTRIBUTOR (\$1,000-\$2,999)

Adams + Associates Architecture  
Alexander Railroad Company  
Allen Tate Relocation &  
Corporate Services  
Bell Construction Co  
Bernard Robinson & Company  
blueharbor bank  
Bonanza Development Company Inc.  
Central Carolina Insurance Agency  
Choate Construction Company  
Davis Regional Medical Center  
Dewberry  
ECS Southeast, LLP  
EDIFICE, Inc.  
ElectriCities of North Carolina, Inc.  
Express Employment Pros  
First Citizens Bank  
First Reliance Bank, Mooresville  
GEL Engineering of NC  
Gary Thomas - Pressly, Thomas &  
Conley, P.A.

Grant Miller - Colliers International  
(Charlotte)  
Greater Statesville Chamber of  
Commerce  
Hendrick Construction  
Interstate Development Co  
Iredell Health System  
J.C. Steele & Sons, Inc.  
J.T. Alexander & Son, Inc.  
JEAT Enterprises, LLC  
Johnson Parts & Supply  
Keary Construction  
Kooks Headers & Exhaust  
Lake Norman Realty  
Landmark Builders  
Legacy Real Estate Advisors  
Lemon Maids  
Maymead, Inc.  
Mikaw Corporation  
Mooresville Realty  
Nandina Properties

Peoples Bank  
PeopleSuite Talent Solutions  
Piedmont HealthCare  
Piedmont Realty  
Pope, McMillian, P.A.  
Pressly Residential Group, LCC  
Progressive AE  
Sir Speedy Printing & Marketing  
Services  
Southern Distilling Company  
Stamey Land Company  
Statesville Country Club  
Stewart Inc.  
SunCap Property Group  
TDS Telecom  
The Keith Corporation  
The Langtree Group  
Thomas & Webber, PLLC  
United Bank  
USI Insurance Services

THANK YOU TO OUR VISIONARY INVESTORS



500 S. Main Street, Suite 449  
Mooresville, NC 28115

116 N. Center Street  
Statesville, NC 28677

[iredelliedc.com](http://iredelliedc.com)